

# THE DIAPASON

DEVOTED TO THE ORGAN

Second Year

CHICAGO, JUNE 1, 1911

Number Seven

## DESIGN FOR TORONTO ORGAN

### LARGE VARIETY OFFERED IN CASAVANT SPECIFICATION

Full Scheme of Stops for What Is Expected to Be the Largest Church Instrument in the Dominion of Canada.

Announcement was made in the May issue of THE DIAPASON of the contract with Casavant Brothers for what may be the largest church organ in Canada, to be placed in St. Paul's Church at Toronto. The specification of this instrument as accepted has been received from the Casavant offices. It follows:

#### PEDAL ORGAN.

1. 32 ft. Double Open (20 from No. 6).
2. 16 ft. Salicional (from 22, choir).
3. 16 ft. Sub Bass (from 34, great).
4. 16 ft. Violone (from 67, orchestral).
5. 16 ft. Geigen (from 36, great).
6. 16 ft. Small Open wood.
7. 16 ft. Open Diapason.
8. 16 ft. Large Open wood.
9. 10 1/2 ft. Quinte Open (from No. 6).
11. 8 ft. Flute (from 34, great).
11. 8 ft. Violoncello (from 67, orchestral).
12. 8 ft. Principal (20 from No. 7).
13. 8 ft. Octave (20 from No. 8).
14. 5 1/2 ft. Octave Quint (20 from No. 6 and 9).
15. 4 ft. Super Octave (20 from No. 8 and 13).
- \*16. 21 ft. Harmonics, V rks. (15-17-19-21-22).
17. 32 ft. Bombardon (20 from No. 18).
18. 16 ft. Ophicleide.
19. 16 ft. Trombone (from No. 81, tuba).
- \*20. 10 1/2 ft. Quint Trombone.
21. 8 ft. Posaune (20 from No. 18).

\*Enclosed in the swell box with the tuba organ. No. 1 to have nine notes from poly-pipe pipes. Wind Pressure 3 1/2 to 8 inches. Reeds 16 inches.

COUPLERS—Choir to Pedal, Great to Pedal, Swell to Pedal, Orchestral to Pedal, Tuba to Pedal.

#### CHOIR ORGAN (Enclosed).

22. 16 ft. Gross Spitz Flote (Tapered) (Pedal).
23. 8 ft. Clarabel Flute (Closed Bass).
24. 8 ft. Salicional.
25. 8 ft. Vox Angelica (Ten. C).
26. 8 ft. Gamba.
27. 8 ft. Open Diapason (Tapered).
28. 4 ft. Spitz Flote (Tapered).
29. 4 ft. Zauber Flote.
30. 2 ft. Gemshorn (Tapered).
31. 1/2 ft. Sesquialtera, IV rks. 12-17-19-22.
32. 16 ft. Contra Fagotto.
33. 8 ft. Clarinet.

Wind Pressure three and a half throughout. COUPLERS—Tremulant, Sub Octave, Octave, Unison Silent, Swell to Choir, Orchestral to Choir, Tuba to Choir, Chimes to Choir, Harpe to Choir.

34. 32 ft. Sub Bourdon (Ped.) (Ten. C).
35. 32 ft. Contra Clarabella (Open to B 5 1/2 ft.).
36. 16 ft. Gross Geigen (Ped.).
37. 8 ft. Rohr Flote (p. p.).
38. 8 ft. Wald Flote (open throughout).
39. 8 ft. Geigen.
40. 8 ft. Open Diapason I.
41. 8 ft. Open Diapason II.
42. 8 ft. Open Diapason III.
43. 5 1/2 ft. Quint Flute (Open).
44. 4 ft. Hohl Flote (triangular).
45. 4 ft. Octave.
46. 4 ft. Geigen Principal.
47. 2 ft. Octave Quint.
48. 2 ft. Super Octave.
49. Harmonics V ranks.
50. 16 ft. Contra Tromba.
51. 8 ft. Tromba.
52. 4 ft. Octave Tromba.

Flue work 4 inches, reeds 10 inches. COUPLERS—Choir to Great, Swell to Great, Orchestral to Great, Tuba to Great.

(Continued on page 2.)

## KEEP BUSY AND WIN FAME

### Success of Weickhardt Organ Seen in Contracts and Tributes.

The pipe organ department of the Hann-Wangerin-Weickhardt Company, Milwaukee, has been exceedingly busy since the beginning of this year and during the last few months ten organs were installed. They represent a cost of over \$25,000.

Following is a list of the churches in which these organs have been erected:

- First M. E. Church, Charleston, W. Va.
- First Presbyterian Church, Maroa, Ill.
- St. John's Evangelical Church, Hartford, Wis.
- German Reformed Church, Kiel, Wis.
- Immaculate Conception Church, St. Helena, Neb.
- St. Patrick's Church, Fayetteville, Ohio.
- St. Mary's Church, Salem, S. D.
- Evangelical Lutheran Bethel Church, Chicago.
- Evangelical Lutheran Church, Ridgeville, Wis.
- German Lutheran Church, Arenzville, Ill.

New contracts have been awarded to this firm by the following churches:

- St. Mark's English Lutheran Church, Sheboygan, Wis., three manuals.
- St. Martin's Church, Clintonville, Wis., two manuals.
- Simpson M. E. Church, Fort Wayne, Ind., two manuals.
- Embury M. E. Church, Freeport, Ill., two manuals.
- Lutheran Tabor Church, Chicago, one manual.
- Evangelical Lutheran Zion's Church, Jubilee, Iowa, two manuals.

The amount of this new work in the aggregate is \$20,000.

Other important work is assured this firm which promises a successful summer season. That the Weickhardt organ is acknowledged in the front rank can be demonstrated by the fact that wherever an instrument is placed it receives the highest possible praise, one prominent organist from eastern musical circles having frankly stated, after giving a recital in St. Stephen's Lutheran Church, Englewood, Chicago: "This is certainly the finest organ I have ever played on." The organ committee, naturally enthusiastic over this remark coming so spontaneously from a man of such high standing and wide experience with organs of every prominent make, promptly informed the Milwaukee firm and congratulated Mr. Weickhardt heartily on the valuable reputation he was gathering in all quarters. Voluntary testimonials and flattering opinions on the Weickhardt organ are being received regularly by this firm, illustrating the fact that really high-grade work is bound to advertise itself and will create for its makers an ever-increasing and profitable territory.

## ERIE FIRM HAS NEW NAME

### Tellers-Sommerhof Organ Company is Young But Sturdy.

With considerable satisfaction THE DIAPASON notes the steady growth of the young but sturdy Erie firm which until now has been the Tellers Organ Company, but has enlarged its name. The following announcement, signed by the Tellers-Sommerhof Company, contains the facts:

"We beg to announce that pursuant to a resolution of the stockholders, the corporate name and title of the Tellers Organ Company was changed by certificate filed with the secretary of the commonwealth to the name and title of Tellers-Sommerhof Organ Company.

"Mr. W. A. Sommerhof, one of the original stockholders of the Tellers Organ Company, has contributed much to the success of this company, and as an expression of appreciation the stockholders deemed it fitting that his name should appear in the title of this corporation and the name has accordingly been changed to Tellers-Sommerhof Organ Company.

"We would state, however, that otherwise the corporation and the personnel of its management will remain unchanged. The same standard of production will be maintained that in the past marked the Tellers organ, the product of intelligent and conscientious workmanship. Nothing has changed but the name."

## FINISH \$15,000 4-MANUAL

### Stevens Company Sending New Organ to Detroit Church.

From the factory of the Stevens Organ Company of Marietta, O., has come a \$15,000 organ of four manuals for the Woodward Avenue Presbyterian church of Detroit, Mich. The first shipment of the organ parts was made two weeks ago. July 11 has been set as the day of dedication.

The work of building this large instrument was under the supervision of A. G. Sparling, superintendent of the Stevens plant since it began building organs. He also drew up the specifications. Mr. Sparling's experience as a pipe organ builder is well known.

A complete description of this organ will appear in the July issue of THE DIAPASON.

## FOR SCHOOL AND CHURCH

### Cheney, Wash., to Have Bennett Organ Which Will Cost \$2,150.

The First Methodist Church of Cheney, Wash., has just contracted for a new Bennett organ to cost \$2,150. The organ will have nine registers, nine couplers and adjustable combination pistons, crescendo pedal, and other accessories usual to larger organs. Mr. Carnegie has donated half the cost of this organ.

Cheney contains a state normal school, and it is planned to make organ work in connection with this instrument a part of the school curriculum.

## DEDICATION AT CATHEDRAL

### CLARENCE DICKINSON IN FIRST RECITAL ON ORGAN

Skinner Masterpiece at St. John the Divine Opened—Specification of Instrument in the Great New York Edifice.

One of the great events of the year in the world of organ building occurred in New York City when the instrument built by Edward M. Skinner of Boston for the great Cathedral of St. John the Divine was opened. Clarence Dickinson, who has been repeating in the east the success he made in Chicago as an organist and all-around musician, presided at this truly wonderful organ and gave the following program:

Cathedral Prelude and Fugue,  
Allegro (Second Sonata),.....Bach  
Discant on Chorale "Rejoice Beloved"  
.....Benedict Ducis  
(Earliest remaining organ composition,  
1480-1544.)

Gavotte from Twelfth Sonata.....  
.....Padre Martini

Variations on two themes by Bach from the Cantata "Weeping and Mourning" and the "Crucifixus" of the B minor Mass, ending with the chorale "What God Wills is Best".....  
.....Liszt

Ave Maria.....Arkadelt-Liszt  
Humoreske.....Dvorak  
Dithyramb.....Clarence Lucas  
(Dedicated to Clarence Dickinson.)  
Berceuse.....Dickinson  
Finlandia.....Sibelius

Three other noteworthy recitals since that of Mr. Dickinson were given in May as follows:

May 15, 5 p. m., W. C. Macfarlane.  
May 22, 5 p. m., Samuel A. Baldwin.  
May 29, 5 p. m., Gaston Dethier.

That every organist and organ builder who reads THE DIAPASON may fancy himself at the keyboard of Mr. Skinner's masterpiece of construction the specification herewith is presented:

#### GREAT ORGAN

- Feet
- 16 Diapason.
  - 16 Bourdon.
  - 8 First Diapason.
  - 8 Second Diapason.
  - 8 Third Diapason.
  - 8 Philomela.
  - 8 Gross Floete.
  - 8 Hohl Flute.
  - 8 Gedacht.
  - 8 Gamba.
  - 8 Erzähler.
  - 8 Harmonic Flute.
  - 4 Octave.
  - 4 Gambette.
  - 4 Flute.
  - 2 Fifteenth.
  - Mixture.
  - 8 Trombone.
  - 16 Ophicleide.
  - 8 Harmonic Tuba.
  - 4 Harmonic Clarion.

#### SWELL ORGAN

- Feet.
- 16 Dulciana.
  - 16 Bourdon.
  - 8 First Diapason.
  - 8 Second Diapason.
  - 8 Third Diapason.
  - 8 Spitz Floete.
  - 8 Salicional.
  - 8 Viola.
  - 8 Claribel Flute.
  - 8 Aeoline.

- 8 Voix Celestes.
- 8 Unda Maris.
- 8 Gedacht.
- 4 Octave.
- 4 First Flute.
- 4 Second Flute.
- 4 Violin.
- 2 Flautino.
- Mixture.
- 16 Trumpet.
- 16 English Horn.
- 8 Cornopean.
- 8 French Trumpet.
- 8 Oboe.
- 8 Vox Humana.
- 4 Clarion.
- Tremolo.

CHOIR ORGAN (In Box).

- 16 Gedacht.
- 16 Gamba.
- 8 Diapason.
- 8 Geigen Principal.
- 8 Dulciana.
- 8 Dulcet.
- 8 Concert Flute.
- 8 Quintadena.
- 4 Flute.
- 4 Fugara.
- 2 Piccolo.
- 16 Fagotto.
- 8 Saxaphone.
- 8 Clarinet.
- 8 English Horn.
- 8 Orchestral Oboe.
- 8 Vox Humana.
- Carillons.
- Tremolo.

SOLO ORGAN.

- 8 Stentorphone.
- 8 Philomela.
- 8 Claribel Flute.
- 8 Harmonic Flute.
- 8 Voix Celestes.
- 8 Gamba.
- 4 Hohl Pfeif.
- 4 Flute.
- 4 Octave.
- Cymbal.
- 16 Ophicleide.
- 8 Tuba.
- 8 Tuba Mirabilis.
- 8 Flugel Horn.
- 8 Choir Clarinet.
- 8 Choir Orchestral Oboe.
- 4 Clarion.
- Tremolo.

PEDAL ORGAN.

- 32 Diapason.
- 32 Contra Violone.
- 16 Violone.
- 16 First Diapason.
- 16 Second Diapason.
- 16 Gamba.
- 16 First Bourdon.
- 16 Second Bourdon.
- 16 Dulciana.
- 8 Gedacht.
- 10 3/4 Quinte.
- 8 'Cello.
- 8 First Octave.
- 8 Second Octave.
- 4 Super Octave.
- 32 Bombarde.
- 8 Euphonium.
- 16 Ophicleide.
- 16 English Horn.
- 8 Tuba Mirabilis.
- 8 Tuba.
- 4 First Clarion.
- 4 Second Clarion.
- 8 Pizzicato.

COUPLERS.

- |                       |                       |
|-----------------------|-----------------------|
| Swell to Great        | Choir to Great 16 ft. |
| Swell to Choir        | Choir to Pedal        |
| Swell to Solo         | Choir to Pedal 4 ft.  |
| Swell to Swell 4 ft.  | Choir to Choir 16 ft. |
| Swell to Swell 16 ft. | Choir to Choir 4 ft.  |
| Swell to Great 4 ft.  | Choir to Solo         |
| Swell to Great 16 ft. | Solo to Solo 4 ft.    |
| Swell to Pedal        | Solo to Solo 16 ft.   |
| Swell to Pedal 4 ft.  | Solo to Swell         |
| Swell Unison Off      | Solo to Great         |
| Great to Solo         | Solo to Great 4 ft.   |
| Great to Great 4 ft.  | Solo to Great 16 ft.  |
| Great to Pedal        | Solo to Choir         |
| Choir Unison Off      | Solo to Pedal         |
| Choir to Great        | Solo to Pedal 4 ft.   |
| Choir to Great 4 ft.  | Solo Unison Off       |

There is a suitable combination action adjusted at the console and visibly affecting the registers. The organ is provided with the following expression pedals and appliances:  
 Sforzando pedal.  
 Great to pedal reversible.  
 Swell to pedal reversible.  
 Balanced choir pedal.  
 Balanced solo pedal.  
 Crescendo pedal.

LA MOTTE WELLS LEAVES

Bennett Manager in Chicago to Retire From Organ Business.

On June 1 Mr. La Motte Wells, formerly with the Lyon & Healy pipe organ department and recently manager of the Chicago office of the Bennett Organ Company, will go into an established commercial business in which he will hold a one-third interest and will become the Chicago manager. Mr. Wells' successor has not been announced by the Bennett Company.

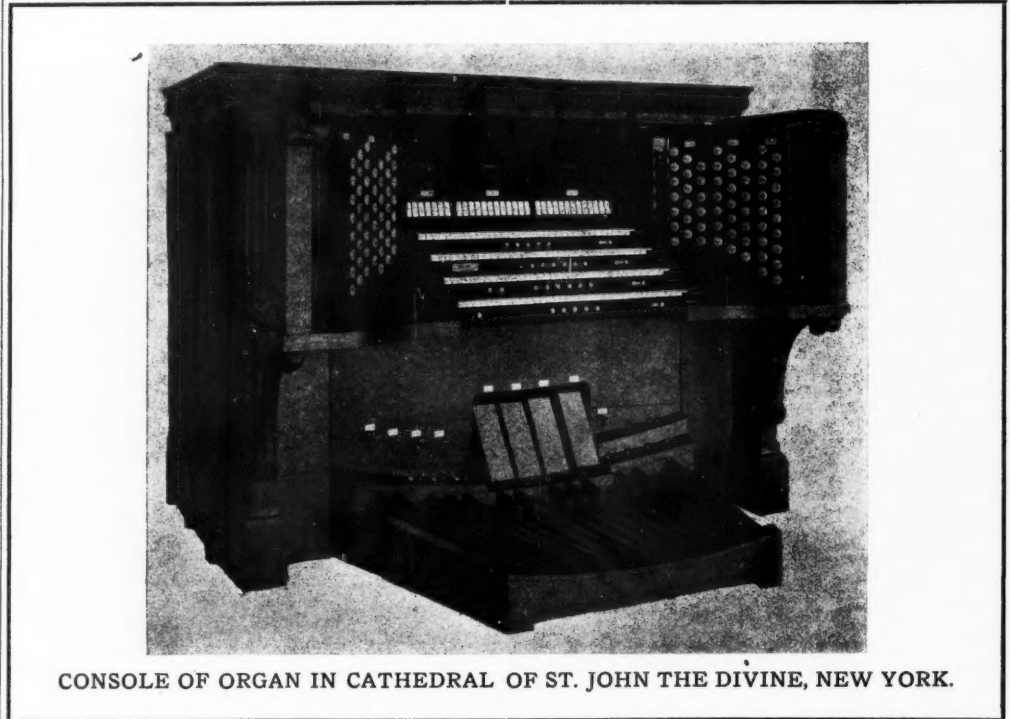
Mr. Wells is well known among organists and organ builders in all

DESIGN TORONTO ORGAN

(Continued from page 1.)

- Chimes to Great, Harps to Great.
- SWELL ORGAN (Enclosed).
- 53. 16 ft. Double Stopped Diapason.
- 54. 8 ft. Stopped Diapason (Double Mouths).
- 55. 8 ft. Horn Diapason.
- 56. 8 ft. Aeoline.
- 57. 8 ft. Voix Celestes (Ten. C).
- 58. 4 ft. Lieblich Flote.
- 59. 4 ft. Octave Gamba.
- 60. 2 ft. Super Octave Gamba.
- 61. 1/2 ft. Mixture V rks. (12-19-22-26-29).
- 62. 8 ft. Oboe.
- 63. 8 ft. Vox Humana.
- COUPLERS—Tremulant, Sub Octave, Octave, Unison Silent.
- 64. 16 ft. Double Trumpet.

- 95. 1 3/4 ft. Dolce Cornet, V rks. 1-8-12-15-17.
- 96. 16 ft. Contra Oboe.
- 97. 8 ft. Vox Humana.
- COUPLERS—Tremulant, Echo Sub Octave, Echo Octave, Echo Unison Silent, Echo to Choir, Echo to Great, Echo to Swell, Echo to Orchestral, Echo to Pedal.
- PEDAL.
- 16 ft. Gamba (from Contra Gamba).
- 16 ft. Gedeckt (enclosed).
- The whole on six-inch wind and enclosed in a swell box.
- ADJUSTABLE COMBINATION PISTONS—Six to Pedal Organ, Five to Choir Organ, Six to Great Organ, Six to Swell Organ, Six to Orchestral Organ, Four to Tuba Organ, Four to Echo Organ, Eight to the whole organ (foot), All stops off.
- OTHER PISTONS REVERSIBLE—Swell



CONSOLE OF ORGAN IN CATHEDRAL OF ST. JOHN THE DIVINE, NEW YORK.

parts of the country, and his geniality and reliability have endeared him to those with whom he has dealt, making his retirement from the organ field a subject of keen regret.

WURLITZER WILL EXTEND

Twenty Acres Bought for Enlargements at North Tonawanda.

The Rudolph Wurlitzer Company is planning an extensive improvement at North Tonawanda, N. Y. It has purchased over twenty acres adjoining its present plant and will erect a new plant, nearly equal to the present one in floor space, which will be used exclusively by the Hope-Jones department in the manufacture of pipe organs.

Jaekel Places Instrument.

A new organ costing \$2,000 has just been installed in the First Methodist Church of Grand Island, Neb. The instrument was put up by Julius Jaekel, the Chicago organ expert for the Hinners Company. It was given by Mrs. C. F. Bentley as a memorial for her husband, but Mrs. Bentley herself did not live to see the organ in place. The Hinners Company of Pekin, Ill., has installed an organ in the Finnish Lutheran Church of Hancock, Ill.

Recital by Herbert Sprague.

Herbert F. Sprague gave an organ program at Trinity church, Toledo, O., Tuesday evening, May 2.

- 65. 8 ft. Trumpet.
- 66. 4 ft. Clarion.
- Flue work, Oboe and Vox Humana four inches; other reeds eight inches.
- COUPLERS—Choir to Swell, Orchestral to Swell, Tuba to Swell.
- ORCHESTRAL ORGAN (Enclosed).
- 67. 16 ft. Contra Viola (Ped.)
- 8 ft. Open Diapason.
- 68. 8 ft. Viole d'Orchestral.
- 69. 8 ft. Viole Celeste (throughout).
- 70. 4 ft. Viole Octaviante.
- 86. 3/4 ft. Grande Fourniture V rks. 12-15-15.
- 72. 8 ft. Quintaton.
- 73. 8 ft. Flute Harmonique.
- 74. 4 ft. Concert Flute Harmonique.
- 75. 2 ft. Piccolo Harmonique.
- 76. 16 ft. Corno di Bassetto.
- 77. 8 ft. Cor Anglais.
- 78. 8 ft. Orchestral Hautboy.
- 79. Harp.
- 80. Chimes.
- Wind pressure 8 inches throughout.
- COUPLERS—Tremulant, Sub Octave, Octave, Unison Silent, Choir to Orchestral, Swell to Orchestral.
- TUBA DIVISION.
- (Playable from any manual but not affected by octave couplers.)
- 81. 16 ft. Trombone (Ped.)
- 82. 8 ft. Trompette Harmonique.
- 83. 8 ft. Tuba Sonora.
- 84. 5 1/2 ft. Quint Horn.
- 85. 4 ft. Clarion Harmonique.
- 86. 3/4 ft. Grande Fourniture V rks. 12-15-19-22-26-29.
- 87. 8 ft. Tuba Mirabilis.
- 88. 4 ft. Octave Tuba.
- First six stops enclosed in the swell box; last two unenclosed. Wind pressure: Reed, 16 inches; mixture, 8 inches.
- ECHO ORGAN (Enclosed).
- (Playable from any manual and affected by octave couplers.)
- 89. 16 ft. Contra Gamba (Ped.)
- 90. 8 ft. Viole de Gambe.
- 91. 8 ft. Voix Celeste (Ten. C).
- 92. 8 ft. Zauber Flote.
- 93. 8 ft. Unda Maris (Ten. C).
- 94. 4 ft. Lieblich Flote.

to Great, Orchestral to Great, Orchestral to Swell, Tuba to Great.

VENTIL PISTONS WITH INDICATORS—Full Organ, All Reeds with Unison Couplers, All Strings with Unison Couplers.

ROCKING TABLETS OR ON AND OFF PISTONS IN KEY FRAMES AT LEFT, NOT TO MOVE THE KNOBS—Echo to Pedal, Choir to Pedal, Great to Pedal, Swell to Pedal, Orchestral to Pedal, Tuba to Pedal.

RIGHT SIDE—Great Off, Swell Off, Orchestral Off, Tuba Off, Choir Off, Echo Off.

CRESCENDO COMBINATIONS WITH INDICATORS—Great and Swell with suitable Pedal. All Diapasons with Unison Couplers, All Reeds with Unison Couplers, All Strings with Unison Couplers, Normal.

There is to be an electric action, with through electric blowers.

BRUCE G. KINGSLEY ON TOUR.

Bruce Gordon Kingsley, organist of the Auditorium, Los Angeles, is delivering a series of musical travelogues illustrating "Sunny California" in the principal cities of the United States and England. The California Development Board is equipping Mr. Kingsley with slides and other paraphernalia for the tour, which is under its direction.

Reinisch Completes Organ.

Henry Reinisch, who learned the organ building trade from his father in Germany, has completed his first large commission in this country, an organ of twenty-six stops for the Guardian Angel Catholic Church of Manistee, Mich. The Reinisch factory is at Grand Rapids. Mr. Reinisch is at work on another instrument for the Church of the Sacred Heart, in Saginaw.

**TWO TO BE READY BY JUNE 15**

**H. HALL & CO. INSTALLING LARGE ORGANS IN THE EAST**

**Meriden, Conn., Will Have Three-Manual and Hyde Park, Mass., Three-Manual With Echo—Both Are Electric.**

H. Hall & Co. have finished two organs which are to be complete for June 15. An organ for Hyde Park, Mass., is the gift of Edward E. Taylor, Boston, Mass. During April Hall & Co. installed organs in the Congregational church, Penacook, N. H.; St. Michael's Episcopal church, Litchfield, Conn., and St. Margaret's school, Waterbury, Conn. They have just closed a contract with the Fairmount Baptist church, Newark, N. J., for a two-manual tubular pneumatic instrument.

Here are the specifications of the organ for St. Andrew's P. E. church, Meriden, Conn., which is being installed:

Three Manuals and Pedals. Compass of Manuals CC to C4, 61 notes. Compass of Pedals CC to G, 32 notes. Electric action.

**GREAT ORGAN.**

- 16 ft. Open Diapason.
- 8 ft. Open Diapason.
- 8 ft. Gamba.
- 8 ft. Doppel Flute.
- 4 ft. Octave.
- 4 ft. Flute Harmonic.
- 2 ft. Super-Octave.
- 8 ft. Trumpet.

**SWELL ORGAN.**

- 16 ft. Bourdon.
- 8 ft. Open Diapason.
- 8 ft. Viola.
- 8 ft. Viol d'Orchestre.
- 8 ft. Viol Celeste.
- 8 ft. Stopped Diapason.
- 8 ft. Quintadena.
- 4 ft. Flauto Traverso.
- 3 rk. Dolce Cornet.
- 8 ft. Cornopean.
- 8 ft. Oboe.

**CHOIR ORGAN.**

- 8 ft. Geigen Principal.
- 8 ft. Dulciana.
- 8 ft. Melodia.
- 4 ft. Flute d'Amour.
- 2 ft. Piccolo.
- 8 ft. Clarinet.

**PEDAL ORGAN.**

- 16 ft. Open Diapason.
- 16 ft. Bourdon.
- 16 ft. Dulciana.
- 16 ft. Violone.
- 8 ft. Violoncello.

**COUPLERS**—Swell to Great, 8 ft.; Swell to Great, 16 ft.; Swell to Great, 4 ft.; Swell, 4 ft.; Swell, 16 ft.; Swell to Choir, 8 ft.; Choir to Great, 8 ft.; Choir to Great, 16 ft.; Great, 4 ft.; Great to Pedal, Choir to Pedal, Swell to Pedal, Swell to Unison (on and off pistons).

**ADJUSTABLE COMBINATIONS**—Four pistons operating on great organ, five pistons operating on swell organ, three pistons operating on choir organ, three pistons operating on pedal organ.

**PEDAL MOVEMENTS**—Balanced swell, balanced choir, balanced crescendo, reversible great to pedal, sforzando or full organ.

The blowing apparatus is a modern five horse-power Orgoblo, made by the Organ Power Company of Hartford, Conn.

Following is the specification of the organ for the First Congregational church, Hyde Park, Mass.:

Three Manuals, with Echo Organ playable from Great, and pedals. Compass of Manuals CC to C4, 61 notes. Compass of Pedals CCC to G, 32 notes. Electric Action.

**GREAT ORGAN.**

- 16 ft. Open Diapason.
- 8 ft. Open Diapason.
- 8 ft. Dolce.
- 8 ft. Gamba.
- 8 ft. Doppel Flute.
- 8 ft. Viol d'Amour.
- 4 ft. Flute Harmonic.
- 4 ft. Octave.
- 8 ft. Tuba.

**SWELL ORGAN.**

- 16 ft. Bourdon.
- 8 ft. Open Diapason.
- 8 ft. Salcional.
- 8 ft. Viol d'Orchestre.
- 8 ft. Viol Celeste.
- 8 ft. Rohr Flute.
- 8 ft. Aeoline.
- 4 ft. Flauto Traverso.
- 2 ft. Flautino.
- 8 ft. Cornopean.
- 8 ft. Oboe.

**CHOIR ORGAN.**

- 8 ft. Open Diapason.
- 8 ft. Dulciana.
- 8 ft. Melodia.
- 4 ft. Flute d'Amour.
- 8 ft. Clarinet.

**ECHO ORGAN.**

- 8 ft. Gedacht.
- 8 ft. Viol Aetheria.
- 8 ft. Unda Maris.
- 8 ft. Vox Humana.

**PEDAL ORGAN.**

- 16 ft. Open Diapason.
- 16 ft. 2nd Open Diapason.
- 16 ft. Bourdon.
- 16 ft. Lieblich Gedacht.
- 8 ft. Flute.
- 8 ft. Gedacht.

**COUPLERS**—Swell to Great, 8 ft.; Swell to Great, 16 ft.; Swell to Great, 4 ft.; Swell, 16 ft.; Swell, 4 ft.; Choir to Great, 8 ft.; Choir to Great, 16 ft.; Swell to Choir, 8 ft.; Choir, 4 ft.; Choir, 16 ft.; Great to Pedal, Swell to Pedal, Swell to Pedal, 4 ft.; Choir to Pedal, Swell Unison (on and off pistons), Choir Unison (on and off pistons), Echo to Great Off, Echo, 16 ft.; Echo, 4 ft.

**ADJUSTABLE COMBINATIONS**—Five pistons operating great organ and couplers; six pistons operating swell organ and couplers; four pistons operating choir organ and couplers, four pistons operating pedal organ and couplers.

**PEDAL MOVEMENTS**—Balanced Crescendo, Balanced Swell, Balanced Choir, Balanced Echo, Sforzando or Full Organ, Reversible Great to Pedal, Reversible Swell to Great.

**ACCESSORIES**—Swell Tremolo, Choir Tremolo, Echo Tremolo, Wind Indicator, Crescendo Indicator.

A five horse-power Orgoblo is used to blow this organ also.

**OPEN VAN DINTER ORGAN**

**Large Two-Manual at Fort Wayne, Ind., Cathedral Dedicated.**

Louis Van Dinter, the organ builder of Mishawaka, Ind., has completed an \$8,000 organ for the Cathedral of the Immaculate Conception of Fort Wayne. It is a two-manual with thirty-four speaking stops. The organ was dedicated by Professor Charles Hanson, the blind organist of the Second Presbyterian Church of Indianapolis.

**Memorial Is Presented.**

Mrs. Daniel Vail of Brooklyn has presented an organ costing \$2,000 to the Baptist Church of Oyster Bay, Long Island, as an Easter gift. The instrument is to be a memorial to Mrs. Vail's mother, Mrs. Catherine M. Lewis. Mrs. Vail herself for many years was an attendant of the Oyster Bay Church.

**To Enlarge for Organ.**

The First Methodist Church of Albany, Ore., has decided to build a wing to its structure, put in another gallery and build an additional chamber large enough to contain a new organ and a library. Exclusive of the pipe organ the improvements will cost \$6,500.

**Buys Duluth Instrument.**

The English Lutheran Church of Superior, Wis., has purchased the organ formerly used in the Swedish Lutheran Church of Duluth. The Duluth church has bought a new organ, costing \$3,000.

**BUILT BY EMMONS HOWARD**

**W. M. JENKINS PREPARES SCHEME OF ST. LOUIS ORGAN**

**Carondelet Presbyterian Church Instrument from Westfield, Mass.—Work Is Expected to Be Ready by July 1.**

William M. Jenkins has prepared a scheme for a pipe organ for the Carondelet Presbyterian church, St. Louis. The contract for this organ has been let to the Emmons Howard Pipe Organ Company of Westfield, Mass. It is expected to be ready July 1. The stops will be operated by oscillating tablets, with the different groups of stops separated a sufficient distance so that the organist may instantly reach any stop desired with the greatest rapidity. Each stop and coupler will be separated from the others sufficiently to dispense with the trouble of pushing down more than the special stop desired, which will facilitate the labors of the organist to an appreciable extent. This instrument will be tubular pneumatic. Following is the specification:

**GREAT ORGAN.**

- 1. 8 ft. Open Diapason—Metal.
  - 2. 8 ft. Viola d'Gamba—Metal.
  - 3. 8 ft. Dulciana—Metal.
  - 4. 8 ft. Melodia—Wood.
  - 5. 4 ft. Flute d'Amour—W. & M.
  - 6. 4 ft. Octave—Metal.
  - 7. 8 ft. Trumpet—Reeds.
- SWELL ORGAN.**
- 8. 16 ft. Bourdon—Wood.
  - 9. 8 ft. Open Diapason—Metal.
  - 10. 8 ft. Salcional—Metal.
  - 11. 8 ft. Aeoline—Metal.
  - 12. 8 ft. Stopped Diapason—Wood.
  - 13. 4 ft. Flute Harmonic—Metal.
  - 14. 4 ft. Violin—Metal.
  - 15. 2 ft. Flautino—Metal.
  - 16. 8 ft. Oboe—Reeds.

**PEDAL ORGAN.**

- 17. 16 ft. Double Open Diapason—Wood.
- 18. 16 ft. Bourdon—Wood.
- 19. 8 ft. Flute—Wood.
- 20. 16 ft. Lieblich Gedacht (from No. 8)—Wood (30 notes).

**PISTON COMBINATIONS**—21. Piano piston acting on Swell and Pedal Organ. 22. Mezzo piston acting on Swell and Pedal Organ. 23. Forte piston acting on Swell and Pedal Organ. 24. Release piston acting on Swell and Pedal Organ. 25. Piano Piston acting on Great and Pedal Organ. 26. Mezzo piston acting on Great and Pedal Organ. 27. Forte piston acting on Great and Pedal Organ. 28. Release piston acting on Great and Pedal Organ.

**COUPLERS**—29. Swell to Great. 30. Swell to Pedal. 31. Great to Pedal. 32. Swell to Great Octaves. 33. Swell to Great Sub-octaves.

**PEDAL MOVEMENTS**—34. Great to Pedal reversible. 35. Balanced Crescendo and Diminuendo Pedal, controlling entire organ. 36. Balanced Swell Pedal.

An Orgoblo will furnish the wind. There is a total of 1,066 pipes.

Mr. Jenkins has prepared the scheme for a small two-manual organ for the Maplewood Congregational church, St. Louis. The contract for this instrument, which will be tubular pneumatic, has been let to the Estey Organ Company, of Brattleboro, Vt. The organ is to be installed Aug. 1. The scheme of stops follows:

**GREAT ORGAN.**

- 1. 8 ft. Dulciana—Metal, 61 pipes.
  - 2. 8 ft. Melodia—Wood, 61 pipes.
  - 3. 8 ft. Open Diapason—Metal, 61 pipes.
  - 4. 4 ft. Octave—Metal, 61 pipes.
- SWELL ORGAN.**
- 5. 8 ft. Salcional—Metal, 61 pipes.
  - 6. 8 ft. Stopped Diapason—Wood, 61 pipes.
  - 7. 4 ft. Flute Harmonic—Metal, 61 pipes.
  - 8. 8 ft. Oboe—Metal, 61 pipes.
- PEDAL ORGAN.**
- 9. 16 ft. Bourdon—Wood, 30 pipes.
- COUPLERS**—10. Swell to Great. 11. Swell to Pedal. 12. Swell to Great Octaves. 13. Great to Pedal. 14. Balanced Swell Pedal.

**THE DIAPASON**

A Monthly Journal devoted to the Organ

S. E. GRUENSTEIN, PUBLISHER

CHICAGO, - - - JUNE 1, 1911

Subscription rate, 50 cents a year, in advance. Single copies, 5 cents. Advertising rates on application.

Address all communications to THE DIAPASON, 520 West Monroe Street, Chicago. Telephone, Franklin 1102.

Entered as second-class matter at the post-office at Chicago, Illinois.

**NOTICE.**

On June 1, 1911, the office of publication of The Diapason will be moved to 520 West Monroe street, Chicago, which will be the editorial and printing headquarters of this paper. On that date the office at Room 55 Auditorium Building will be abandoned. Please

not change address

**WILL ANYONE LET US HAVE \$4?**

There is some humor in this old world after all, even in the seemingly prosaic work of getting "copy" for THE DIAPASON.

One of the industrious members of the staff wrote to the rector of a North Carolina church the other day to find out something about a new \$3,000 organ installed at that gentleman's scene of worship and received this reply:

"True report. We had no program printed; however, for a cash consideration (\$4.00) I will get account and write it for you. We need money for next payment."

If the reverend gentleman doesn't succeed in raising the funds for that organ it is not because he is a poor financier. We think his church has the right man for the place, all conditions considered. Meanwhile we would like to hear how much the builder was made to come down from his price before he got the contract for the instrument.

**THE METROPOLITAN PAPER**

We are not greatly in favor of making fun of those who don't know all about organs, yet occasionally the temptation is too strong to be resisted. As, for example, when a great New York daily reports an organ dedication in this manner:

"Fifty fashionable women who are interested in music, in addition to professional musicians, including several of New York's best organists, passed an hour yesterday afternoon in the grand ballroom of the Waldorf-Astoria, listening with great delight to the new organ which was played by Mr. Didier, organist of St. Francis Xavier church.

"This instrument was built by one of the leading organ makers in New York. It is a splendid instrument, possessing all the qualifications of a big church organ. It is so constructed that the keyboard may be placed in any part of the big room and be connected by a rubber tube with the organ pipes, which are built directly over the stage.

"Yesterday the keyboard at which Didier presided was placed in the center of the ballroom, where everyone

could see him manipulate the several banks of keys and manuals of stops and pedals. To some of those present who had supposed an organ has strings and a sounding board like a piano it was an especially interesting sight to see an organist playing more than a hundred feet from the instrument. It seemed to them like witchery, but it was only one of the evidences of modern science."

We are indebted to the New Music Review for this choice bit, and pass it along to our readers.

**BUNNLETS**

Here comes a hand organ up the street, The "Pooh" and the "Um-Pah" sound so sweet;

Get out your penny banks, The man says life is a long, hard grind, The monkey is kicking, but never mind.

Most good things start with cranks.

The men who have tried to get the organ builders together are cranks. The one who succeeds in organizing them will be a genius.

Jake says: "When a man comes into the shop and talks and talks about what a good man he is, and how he is going to have this, that and the other changed and a lot of these 'dubs' fired, I don't lend him any money. Maybe he won't be here after pay day."

No, that boy who used to make such fine willow whistles did not become an organ builder. He's a business man and is making money.

**BUNN.**

**Clarence Dickinson at Yale.**

Clarence Dickinson was the organist at Woolsey Hall, Yale University, April 3. His program:

Rubeck—Fantasia in F sharp minor

Bach—Air in D.

Le Froid de Mereaux—Toccat.

Thiele—Finale.

Massenet—Meditation religieuse.

Seboeck—Minuet a l'antico.

Dickinson—Berceuse.

Liszt—Fantasia and Fugue on B-A-C-H.

Simonnetti—Madrigale.

Hollins—Concert Overture in C.

**Organists Go to Wellesley.**

Boston members of the American Guild of Organists went to Wellesley May 16 for the meeting at Memorial Chapel at Wellesley College of the New England Chapter. Following a reception and tea on the campus there was a musical service under the direction of Professor Macdougall of the college.

**Plays for Michigan A. G. O.**

Mrs. Simpson W. Horner gave an organ recital under the auspices of the Michigan Chapter of the American Guild at Sault Ste. Marie Monday evening, May 1. The organ numbers included the second sonata by Mendelssohn, suite by Rogers, and a Bach fugue.

**Richmond Church to Buy.**

The First Presbyterian church of Richmond, Va., is about to award the contract for a \$10,000 organ. The organist is Ernest Cosby of that city. The chairman of the music committee is Alexander Forrister.

Mrs. Charles J. Sullivan has left St. Paul's church, Buffalo, N. Y., to accept the position of organist of the First Methodist church of Spokane, Wash.

**REPLACES ORGAN OF 1768**

**NEW AUSTIN INSTRUMENT IN HISTORIC SOUTHERN CHURCH**

**St. Michael's at Charleston, S. C., Has Everything Modern, But Some of the Old Pipes from England Are Used Again.**

The Austin Organ Company of Hartford, Conn., has finished a three-manual organ in the historic St. Michael's church at Charleston, S. C. The specification is interesting in connection with the history of this ancient parish, as a matter of comparison. The new organ is a three-manual of twenty-eight stops, equipped with the full quota of octave couplers and mechanical devices, and certain of the old wooden pipes of the ancient instrument have been used over again, re-voiced. The new instrument also has such modern features as a large scale diapason on the great, vox humana and string stops in the swell, etc.

The old organ at St. Michael's was imported from England in 1768 and the church was opened for worship in February, 1761. This was the first church in the United States to have a vested choir of men and boys, being close in its colonial life to the English traditions both of church and state. The history of the vested choir goes back to 1794. The era of the vested choir in the north did not come till approximately forty years ago, when old Trinity, New York, set the example now generally followed. So St. Michael's was probably alone in its male choir usage for practically 100 years.

The old organ included an open and bourdon on pedal; open, stopped, four-foot principal, twelfth and fifteenth, with melodia, eight-foot flute, tiercina, sesquialtera and trumpet on the great; bourdon, open, stopped diapason, principal, oboe and trumpet in swell, and keraulophon, stopped diapason, four-foot flute, principal and fifteenth on the choir. This must have given a churchly somberness of tone. The stopped pipes ran only to tenor C. The prevalence of diapason and flute stops will be noted. There were no reeds except the trumpet, and no strings.

The Austins are erecting their second four-manual organ in Atlanta, Ga., the other being the giant in the Auditorium armory. They have now eighteen organs in process of construction in the factory. One for the First Reformed church, New York, has just been opened for use. Dr. Garrett Smith is the organist and this gives him command regularly over two Austins, the other being in the chapel of Union Theological Seminary, New York.

**Charles J. Tillman Dead.**

Charles J. Tillman, 50 years old, died at Baltimore May 1 after an illness of two weeks. Mr. Tillman was organist and choir director of St. Vincent's Church for fifteen years, succeeding his father, the late Nicholas Tillman, who occupied the position for thirty-five years.

**G. E. Fisher at Buffalo.**

George E. Fisher, organist of the Lake Avenue Baptist church of Rochester, N. Y., and private organist to Mr. Eastman of kodak fame, gave the recital in the convention hall of Buffalo, April 23.

**FAVORS SHUTTERS ON TOP**

**Frank R. Warren Speaks on Correct Swell-Box Construction.**

Frank R. Warren, the organ builder, read before the Ontario Chapter of the American Guild of Organists at its last meeting in Toronto a paper on "The Expression Department in Organ Construction." Mr. Warren said, in brief:

"The means of expression in organ playing is confined largely to the use of swell boxes. In order to produce satisfactory results the construction should be of sufficiently thick material to control the power of the pipes without sacrificing characteristic tonal qualities.

"Until recently swell boxes were made of wood, varying in thickness from one and one-eighth to one and three-quarters inches, having vertical shutters (sometimes double shutters), placed in the front, which seldom extended to the top of the box. The defects in such construction were thinness of material, the obstacle to free egress of tone in the double shutters, and the 'pocket' at the top of the box.

"Swell boxes should be constructed of such material and thickness that when closed they shall not destroy or even impair the tonal character of the inclosed pipes, and when fully opened, the whole body of tone should have full egress. The windchest should also be inclosed.

"The greatest improvement will come when the shutters are placed over the tops of the pipes, with a slope of fifty degrees to the roof of the swell box. Such an arrangement will free the tone to the fullest extent if the pipes are placed chromatically upon the wind-chest, the basses at the back and the trebles nearest the front."

**PLACE OF VOLUNTARIES**

We are in receipt of a pamphlet entitled, "The Voluntaries and Their Place in the Church Service," by G. Darlington Richards, published by Schirmer, which is well worth perusal. The three set organ numbers of the church service are considered—prelude, offertory and postlude—and their character is analyzed. Inspiration and education are regarded as the criterion in selecting these numbers. An excellent discussion of the art of improvisation follows. The author is actuated by high ideals, which he applies in a common sense, practical way.

**A. G. O. of Western New York.**

The Western New York Chapter of the American Guild of Organists held a public service in the Brick Presbyterian Church of Rochester, Monday evening, May 8. The organists taking part were Mrs. Louis E. Fuller of the Brick Church, Mrs. Mary C. Fisher of the First Baptist Church, and Mrs. Alice Wysard of the Second Baptist Church. The address was given by the Rev. Dr. William R. Taylor, pastor of the Brick Church. His subject was, "The Ancient Te Deum: History; Course of Thought; Musical Interpretation." The choir of the church provided the vocal numbers.

**Engaged by Plainfield Church.**

Charles L. Gulick of New York has been engaged by the Crescent Avenue Presbyterian church of Plainfield, N. J., to succeed Alexander Russell as organist.

**ORGAN PLACED INGENIOUSLY**

**PROBLEM SOLVED IN NOVEL WAY IN CHICAGO CHURCH**

**Hillgreen, Lane & Co. Work Out Plan by Which Father Finn Has Free View of His One Hundred Famous Choristers.**

In the illustration accompanying this is shown the ingenious plan adopted by Hillgreen, Lane & Co. in placing the chancel organ installed by them in the Paulist Fathers church on Wabash avenue, Chicago.

In this treatment the altar was brought forward ten feet from its old niche in the wall, and the chests of the organ, raised eight feet above the floor, were placed between the altar and the wall, projecting somewhat be-

st honors in some of the most important musical contests held in recent years.

That Hillgreen, Lane & Co. were selected to furnish this important organ and that it acceptably serves so critical a body of musicians as Director Finn and his great choir must be a source of keen gratification to that enterprising firm of organ builders. The problem of placing chancel organs and choirs in Catholic churches has hitherto been a baffling one. This solution may prompt more general adoption of a desirable arrangement for the musical features of the service.

**Dedicates Seattle Organ.**

The new \$20,000 organ built by the Kimball Company for the First Methodist church of Seattle, Wash., was dedicated on Friday evening, April 28. W. H. Donley of Indianapolis, Ind., pre-

**LIST OF CARNEGIE ORGANS**

New Instruments Presented by Him to American Churches.

The new organ for Calvary Episcopal Church, Brooklyn, N. Y., was erected during the month of May. The instrument is valued at \$2,500, of which Andrew Carnegie gives one-half. The Baptist Church of Warrensburg, Mo., is to have a new organ to cost \$2,500, of which amount half is given by Mr. Carnegie. The new organ for Centenary Methodist Church of Shelbyville, Ky., was installed in May.

Mr. Carnegie has offered to give one-half of a fund to be raised for an organ in the new Methodist Church of Warrentown, Va. The Friedens Kirche of Fond du Lac, Wis., is to have a new organ as the result of its own initiative and a Carnegie benefaction.

**Geo. Kilgen & Son**

**Pipe Organ Builders**

**3817-3829 Laclede Ave. ST. LOUIS, MO.**

*Send for Catalogue if Interested*

One of the best equipped organ factories in the U. S. Our organs can be found in nearly every State in the Union.

**Tools and Dies for Organ-builders; Moulds and Mandrels for Pipemakers;**

**Metal Parts of all kinds for Organs, Pressboard Valves, Electromagns, Mechanical and Electrical Specialties**

MANUFACTURED BY

**JOSEPH POLLAK**  
215 Sydney St., Dorchester, Mass.

**THE BENNETT Pipe Organ**

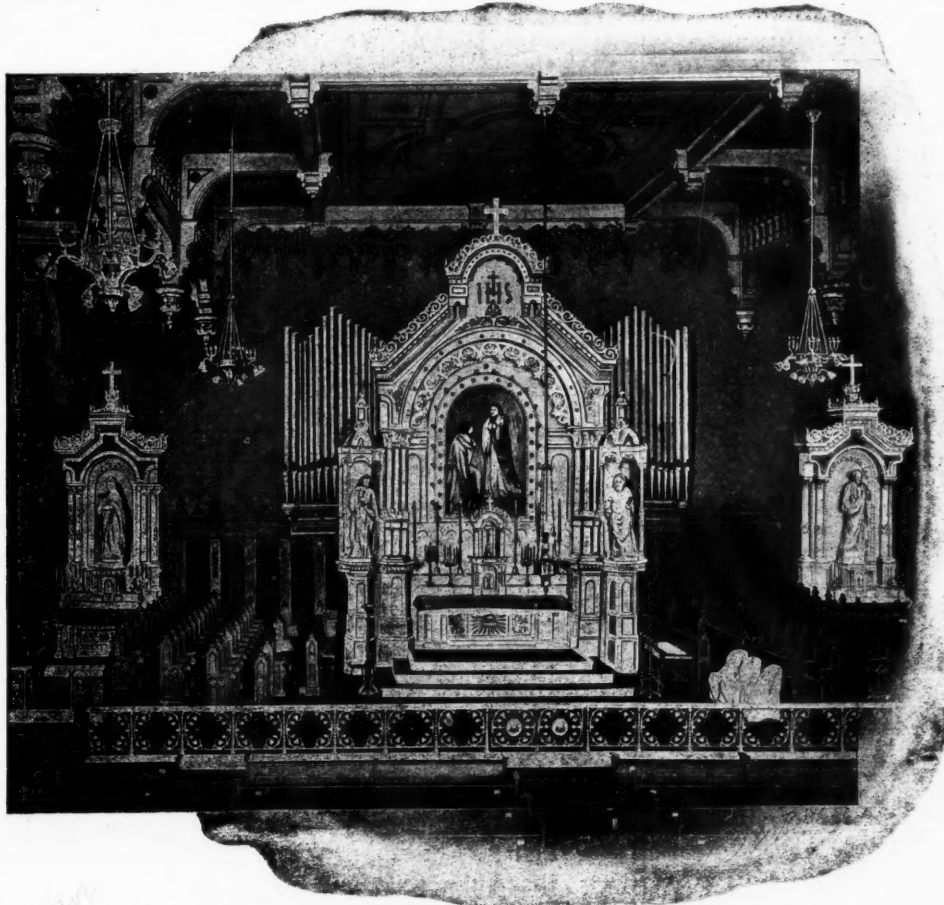
Tubular and Electro-Pneumatic construction of the most effective and reliable type—Our

*Art Organ Portfolio*  
For the Asking

**The Bennett Organ Co.**

Main Office and Works: 44th Street, Rock Island, Illinois.

Chicago Office: 209 State Street, Chicago, Illinois.



**NEW ORGAN IN HIGH SCHOOL AUDITORIUM AT TRENTON, N. J.**

yond the ends of the altar, and being surrounded by decorated pipe-work. The large pedal pipes occupy the vacated niche, while the console is beneath and between the chests, thus giving the organist a free view of his choir, ranged on either side of the chancel. By a clever disposition of mirrors the officiating priests are also kept within sight of the organist, enabling him to follow the service with the greatest precision.

So far as we know this is the first example of a chancel organ so placed in an American Catholic church. That the experiment has proved a success is attested by the organist-director, Father Finn, and by the work of his hundred choristers, an aggregation that unquestionably ranks among the world's greatest singing organizations and which has been awarded the high-

est honors in some of the most important musical contests held in recent years. The specifications of this organ were published in THE DIAPASON at the time the contract was let last year.

Mason Slade of Chicago gave a recital at St. Mark's Cathedral, Grand Rapids, Mich., May 9.



**1200 MOLLER PIPE ORGANS NOW IN USE—**

68 in Pittsburg; 69 in New York; 45 in Baltimore; 38 in Philadelphia; 38 in Cincinnati; 13 in Washington and 20 in Hagerstown, Md. For catalogues and particulars address M. F. Moller, Hagerstown, Md.

**PIPE ORGANS**

of any required capacity or style built to order according to the most approved methods of construction. Work of high quality at moderate prices.

Also manufacturers of CHAPEL, SCHOOL, and PARLOR REED ORGANS which we sell direct from factory at factory prices. Correspondence Solicited. **BUSINESS ORGAN CO.** Pekin, Illinois.



**Typewriters—Half Price—Free Trial—Easy Payments**

Write today, stating make of machine you prefer, and get our wonderful special prices on absolutely perfect machines—good as the day they left the shops. Remember, these machines are guaranteed perfect—and we don't ask you to take our word for it, either. Our liberal offer includes a free trial in your own home—if the machine is not satisfactory in every way, send it back at our expense.

Why pay the manufacturer's full price when you can save 50 per cent by buying from us and pay, if you like, a few dollars a month? We buy large accumulated stocks of writing machines—that's the way of it. Write us today.

**TYPEWRITER SALES COMPANY, Dept.**

**29 Dearborn Street, Chicago, Ill.**

## ACTIVITIES OF THE ORGANISTS

### TAKES POST AT KENWOOD

**Palmer Christian, Back from Europe, Plays in Chicago Again.**

Palmer Christian, who made an enviable reputation as a Chicago organist, but for two years has been studying in Europe, arrived in New York May 14 from Paris. Sunday, May 21, he began work as organist and director of the Kenwood Evangelical church in Chicago. This church is noted on the south side for its excellent music and the high standing of its choir.

Mr. Christian was assistant organist of the American church of the Holy Trinity in Paris. His study both in Leipzig under Straube and in Paris was most satisfactory.

### GRADUATION DAY JUNE 1

**Guilmant School Will Hold Its Tenth Annual Commencement.**

The tenth annual commencement and graduation exercises of the Guilmant Organ School will be held under the direction of William C. Carl in the First Presbyterian church, New York City, Thursday evening, June 1.

Director Carl will spend the summer in Europe, sailing on the Cretic for Naples June 24. He will play his fifth engagement at the Allegheny College commencement season, June 20 and 21. While abroad Mr. Carl will make several important researches and before returning to America will visit the family of the late Alexandre Guilmant in France.

### MISS PEARSON'S RECITAL

**Gives Program in the Woodlawn Park Methodist Church.**

Miss Anne L. Pearson, organist, assisted by Miss Mathilda Heuchling, contralto, gave a recital Sunday afternoon, May 7, at the Woodlawn Park Methodist Episcopal Church. The program is subjoined:

- Prelude No. 3.....Mendelssohn
- Pastorale, from sonata in D minor.....Guilmant
- "Thou Wilt Keep Him in Perfect Peace," from "Isaiah".....Patten Miss Heuchling.
- Fantasia and fugue in G minor..Bach
- Funeral March and Seraphic Song.....Guilmant
- "Like as an Hart Desireth".....Allitsen
- "They Shall Hunger No More".....Neidlinger
- Miss Heuchling.
- "Salut d'Amour".....Elgar
- "Marche de Fete".....Claussmann

#### Tribute to Walter Keller.

"It is an open question whether there is such excellence of organ effect in any other Catholic church in Chicago as that at St. Vincent's," says the Chicago Music News. "This is due no less to the fact that the organ itself is a noble instrument than to the very pronounced organ virtuosity of Walter Keller and his splendid taste. Throughout the service there is an instrumental accompaniment of remarkable beauty, and occasionally the organ rises to little solo bits of very great worth."

### ZEUCH HEARD IN RECITAL

**Gives Program at the New First Congregational Church.**

In compliment to the Chicago Chapter of the American Guild of Organists, William E. Zeuch gave a recital at the New First Congregational Church, Ashland and Washington boulevards, Thursday evening, May 25. He had the assistance of Albert Cotsworth, organist, and the quartet of the church.

- Mr. Zeuch played the following:
- Prelude and Fugue, G major...Bach
  - Adagio—6th Symphony.....Widor
  - Final—6th Symphony.....Widor
  - Seraph's Strain.....Wolstenholme
  - Canon.....Schumann
  - Cradle Song.....Dickinson
  - Marche aux Flambeaux.....Guilmant
  - Scherzo, 2nd Symphony.....Vierne
  - Lied des Chrysanthes.....Bonnet
  - Finale, 1st Symphony.....Vierne

#### E. Russell Sanborn Recital.

E. Russell Sanborn, recital organist, and Miss Gladys M. Butman, pianist, assisted by Master Raymond Ott, soprano, presented the following novel and attractive program May 2 at Haynes Hall, Franklin Square House, Boston:

- Adagio.....Brahms
- Cavatina.....Saint Saens
- Organ and Piano.
- "O For the Wings of a Dove".....Mendelssohn
- Boy Soprano.
- Serenade.....Widor
- Organ and Piano.
- a Nocturne.....Widor
- b Chant sans paroles...Tschaikowsky
- Marche Nuptiale.....Widor
- Organ and Piano.
- Toccata.....Callaerts
- Organ
- Variations.....Widor
- Organ and Piano.

#### Gives Haydn's "Creation."

Haydn's "Creation" was given May 14 at the Memorial Presbyterian church, Brooklyn, N. Y., under the direction of S. Lewis Elmer, organist and choir-master, and an associate of the A. G. O. Mr. Elmer played Hollins' "Spring Song" as a prelude, the Adagio from the C Major Symphony by Haydn for the offertory and Mozart's "Splendente te Deus" as a postlude.

#### M. C. MARKS IN DENVER.

Malcolm C. Marks, formerly organist of St. George's Church, Astoria, L. I., has accepted a similar position at St. Barnabas' Church, Denver, Colo. Mr. Marks is a son of the noted organist and composer, J. C. Marks, of the Church of the Heavenly Rest, New York City. A cantata by the elder Marks, entitled, "Victory Divine," was rendered as a part of the Easter celebration at St. Barnabas'.

#### Kreiser Gives 129th Recital.

Edward Kreiser, the Kansas City organist, gave his one hundred and twenty-ninth organ recital at the Independence Boulevard Christian church Sunday afternoon, April 23. The program was a memorial to Alexandre Guilmant, who was Mr. Kreiser's former master.

### VIRGINIA OPENS BRANCH

**American Guild of Organists Chapter Is Formed There.**

In Virginia has been organized a state chapter of the American Guild of Organists, with J. J. Miller, A. G. O., of Norfolk, dean; E. H. Cosby, of Richmond, secretary; W. H. Baker, of Richmond, register, and William H. Jones of Norfolk, treasurer. The chapter will begin active work by having public services in some of the churches where organists are members of the guild, and also by having public recitals. The first public service was held in Christ Episcopal Church, where Dean Miller is organist and choir-master, and it is hoped to have another in St. Luke's Church, William H. Jones, organist and choir-master.

#### Gives a Guilmant Program.

The second organ recital in the series by the Rhode Island Federation of Musical Clubs took place April 19 in Sayles Memorial Hall, Brown University, Providence, before a large audience. Frank Goulding, organist at the First Congregational Church, rendered a Guilmant program as follows: Grand chorus in march form; Com-

munion in G, No. 1; Marche Funebre et Chant Seraphique; Invocation, in B Flat; Third Sonata, in C Minor; (a) Praeludio, (b) Adagio, (c) Fuga; Andante; Grand Chorus; Elevation, in A Flat; Processional March.

#### Dedicates Organ in Iowa.

The Burlington Pipe Organ Company recently installed an organ of seventeen speaking stops, tubular-pneumatic, in St. Mary's Catholic Church, Marshalltown. The instrument cost \$3,500. Ralph M. Hix of Waterloo presided at the dedicatory service April 20. His program included numbers by Guilmant, Lemare, Dvorak, Handel, Elker, Brewer, Balfe, Puccini and Verdi.

### OF PERSONAL INTEREST

Hugo E. Stahl is representing the Hann-Wangerin-Weickhardt Company in Kansas City as well as in Denver. He has opened an office in Room 318 of the Missouri building at Kansas City and divides his time between the two centers. Mr. Stahl formerly represented the W. W. Kimball Company at Kansas City.

A reception and dinner was tendered James Pearce of Yonkers, N. Y., formerly organist of St. Mark's church, Philadelphia, by the members of the original boys' choir, at Dooner's hotel in the Quaker City, April 20.

# This is Our Idea of A Good Pipe Organ

Diapasons—deep, rich and full—with a **reserve power** which shall eliminate shallowness or harshness.

Characteristic voicing and tone regulating of such quality that each pipe sounded alone is grateful to the ear, and a blending that suggests union rather than mixing.

An action combining lightness, elasticity, promptness and a responsiveness **that can be felt**, with simplicity and reliability.

A general impression of Tonal, Mechanical and Architectural dignity, efficiency and consistency with its purpose and environments.

**If these ideas appeal to you let us get together for mutual benefit.**

## COBURN ORGAN COMPANY

220-224 N. Washtenaw Av., Chicago, Ill.

PHONE WEST 1765

**LAUD JOHN HYATT BREWER**

**CHURCH OBSERVES 30TH ANNIVERSARY OF HIS WORK**

**Well Known Organist and Composer Has Played Three Decades at the Lafayette Avenue Presbyterian Church, Brooklyn.**

The thirtieth anniversary service of John Hyatt Brewer as organist and musical director of the Lafayette Avenue Presbyterian Church in Brooklyn was celebrated April 30. The service began with an organ prelude by Guilman, the andante from the Fourth Sonata, which was finely played by Mr. Brewer. After the invocation and the Lord's Prayer, Hymn 676, to the tune "Serenity," was sung. The offertory was the "Springtime Sketch," for organ, a melodious composition written by Mr. Brewer. The dedicatory prayer followed, and the hymn, "When I Survey the Wondrous Cross."

Rossini's "Stabat Mater," which was given in commemoration of the thirtieth anniversary of Mr. Brewer's conductorship, was presented in an excellent manner. The choir, made up of the four soloists—Miss Elizabeth Tudor, soprano; Miss Mary Jordan, contralto; Thomas Morgan Phillips, tenor; Livingston Chapman, bass—and a large chorus, gave an individual interpretation of the "Stabat Mater," according to Mr. Brewer's conception, which was impressive and beautiful. The "Inflammatus" was sung by Miss Tudor with splendid spirit, and the solos of Mr. Chapman, whose final night it was as a member of Lafayette Avenue Church choir, were noble and impressive. Miss Jordan, the contralto, and the tenor, Mr. Phillips, were notably fine in their solos.

Remarks were made in the morning

sermon on the anniversary of Mr. Brewer.

"He has been a friend and helper of every pastor in the church," was one of the commendatory sentences of Dr. McAfee in his sermon. At the close of the service Mr. Brewer received many congratulations from members of the congregation, and numerous good wishes for his future success.

**PRESIDES AT DEDICATION**

**J. Warren Andrews' Program at the Lynn, Mass., Opening.**

In presiding at the opening of the memorial organ built by Hillgreen, Lane & Co. for the Boston Street M. E. Church at Lynn, Mass., April 19, J. Warren Andrews, A. G. O., gave the following program:

- Organ—Concert Sonata, Op. 45.... Eugene Thayer
- Gavotte ..... Martini
- Serenade in F..... Gounod
- Contralto Solo—"Ah! Rendimi"... Rossi
- ..... Mrs. Hart.
- Organ—Concertsatz in C Minor... L. Thiele
- Contralto Solo—"The Silver Ring" ..... Chaminade
- "An Open Secret"..... Woodman
- ..... Mrs. Hart.
- Organ—Largo in G.. Handel-Whitney
- Prayer and Cradle Song..... Guilman
- ..... March Militaire ..... Gounod
- Contralto Solo—"Dost Thou Know That Sweet Land?"..... Thomas
- Organ—Fugue—(St. Ann's) J. S. Bach
- "Bethany"—Transcription .... J. W. Andrews
- .....
- Finale—First Sonata..... Eugene Thayer

Mr. Andrews has been in great demand for concerts this spring, and has played before the A. G. O. and in St. Luke's Church, New York.

**H. HALL & CO.**

NEW HAVEN, CONN.

*Builders of*

Electric and Tubular Pneumatic

**Pipe Organs**

for Church, Hall or Residence

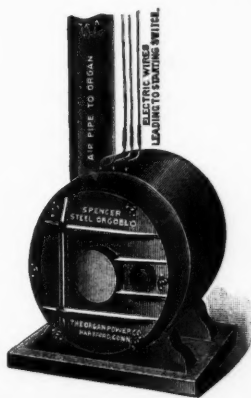
We solicit your inquiries and investigations, confident in the knowledge that our instruments combine all useful features of modern voicing and construction.

Skillful Workmanship, Perfect Mechanism and High - Class Finish.

BOOKLET ON REQUEST

*The*  
**Steel**  
**"Orgoblo"**

is in a class by itself in that it is the only metal-constructed, highly - efficient, silent, turbine organ blower on the market. Made by a concern of over seventeen years' experience in the organ-blowing specialty. Over 2,000 sold in the past five years, operating instruments from the smallest reed organs to the largest, high-pressure pipe organs in the world.



**The Organ Power Company**  
HARTFORD, CONN.

**WE** ARE PARTICULARLY well fitted out in our wood shop, and are prepared to build nearly anything the builder or jobber may require. ¶ We make wind chests of the regular slide pattern or pneumatic chests after specification, to be submitted by the builder. ¶ Action parts, couplers, pedal key boards (both styles), adjustable organ seats, and wood pipes of all varieties. ¶ Our metal pipes need no introduction, having been on the market for nearly three quarters of a century.

*We would be pleased to quote on Decorated Front Pipes*

**SAMUEL PIERCE ORGAN PIPE CO.**  
READING, MASS.

**ST. LOUIS FALLS INTO LINE**

**Latest to Plan School Organ—Pater-son Organ's Broad Use.**

The new organ planned for the Pater-son (N. J.) high school, of which men-tion was made in the last issue, will cover a broader field of usefulness than was originally supposed. Free public recitals will be given upon it through-out the season, thus securing its edu-cational advantages to the general public as well as to the pupils of the school.

The committee in charge plans to make the organ a memorial to Miss Elizabeth Kelley, formerly chairman of the organ fund committee and a mem-ber of the high school faculty, who died recently. Two thousand dollars has been subscribed. The instrument is to cost \$10,000.

At the dedication of the Franklin school building in St. Louis, Alfred G. Robyn, organist and composer, and former resident of St. Louis, announced his intention of starting a fund toward the installation of a pipe organ in the school. He said he would be glad to make a special trip to St. Louis to be the first to play the instrument.

**Lemare Sees Skinner Organ.**

Edwin H. Lemare, the noted English organist, composer and transcriber of orchestral works for organ, was in Cin-cinnati the first of May to inspect the new organ in the Park Avenue Chris-tian Science church. E. M. Skinner of Boston, the builder of the organ, was with him. Mr. Lemare designed the in-strument. Cincinnati people had the treat of hearing their organ dedicated by one of the greatest of modern masters of the instrument.

*The*  
**Wirsching**  
**ORGAN**

**Individuality**  
— and —  
**Excellence**

*Merits and invites*  
*investigation*

**Specifications, Estimates**  
**and Literature sent**  
**on request**

**The**  
**Wirsching Organ**  
**Company**  
**SALEM, OHIO**

**The "Weickhardt" Organ**

*A CROWNING ACHIEVEMENT OF THE*  
*MODERN ART OF ORGAN BUILDING*



*The Home*  
*of the*  
**"Weickhardt"**  
*Organ*

**Special Features:**

The "Weickhardt" Universal Chests.  
(Patented Aug. 20, 1907.)

- The "Weickhardt" Tubular Pneumatic Action.
- The "Weickhardt" Key, Stop and Coupler Action.
- The "Weickhardt" Coupler System.
- The "Weickhardt" Adjustable Combination Action.
- The "Weickhardt" Tone Production.

Upon request we will forward comprehensive literature, fully describing the grandeur and artistic qualities of the

**"WEICKHARDT" PIPE ORGAN**

*For Further Particulars Address*

**Hann-Wangerin-Weickhardt Co.**  
**112-124 Burrell St., Milwaukee, Wis.**

**AUSTIN ORGANS**

The history we have heard about many pipe organs is "endless trouble and disappointment."

The invariable story we read about our own organs is "*Perfectly sat-isfactory, tonally beautiful and mechanically reliable.*"

Between these two extremes there is a wide gulf.

*You can make no mistake* if you buy an *Austin*. Most everybody knows the *Austin*. If you do not, full information will be gladly and promptly sent you on request

We can give you everything any other builder can give, and also the **UNIVERSAL AIR CHEST** which none other can give.

**AUSTIN ORGAN COMPANY**

165 WOODLAND STREET,

HARTFORD, CONN.